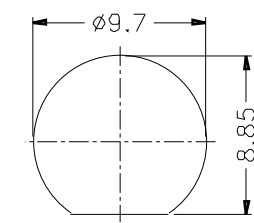
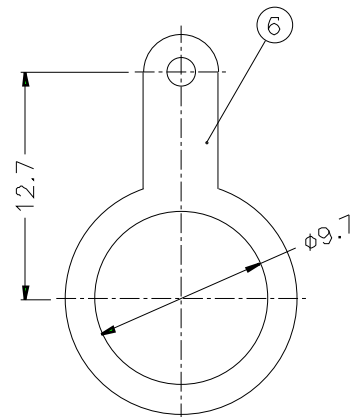
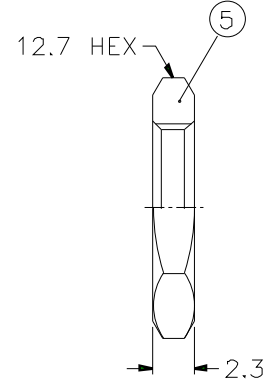
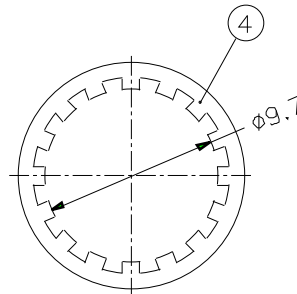


REVISIONS		
ISS	ZONE	DESCRIPTION\PER REQUEST\DATE



RECOMMENDED MOUNTING HOLE



NOTES: FINISH (PLATING THICKNESS IN MICRO-INCHES)
 1. BRASS PER QQ-B-626
 2. BRASS PER QQ-B-613
 3. NICKEL PL. 100 MIN. THICK OVER COPPER STRIKE
 4. PHOSPHOR BRONZE PER QQ-B-750
 5. GOLD PL. 3 MIN. THICK OVER NICKEL PL. 100 MIN. THICK OVER COPPER STRIKE
 6. TEFLON MIL-P-19468

1. MAX. PANEL THICKNESS=3.2mm

DIMENSIONS ARE IN MILLIMETERS						PART NO. B6351B1-NT3G-50		Amphenol		
6	SOLDER TAG	NOTE 2	NOTE 3	1	B7310-7	APPROVED	DATE			TITLE
5	HEX NUT	NOTE 1	NOTE 3	1	HN127-3/8-32 X23	CHECKED	DATE			BNC BULKHEAD RECEPT. JACK
4	LOCK WASHER	NOTE 2	NOTE 3	1	LW-127/97X05	DRAWN	DATE			DRAWING NO. KJ-B6351B1-NT3G-50
3	CONTACT PIN	NOTE 4	NOTE 5	1	B7310-3-50	FILE NO.		ITEM NO.		
2	INSULATOR	NOTE 6	NATURAL	1	B7310-2T-50-B					
1	BODY	NOTE 1	NOTE 3	1	B7310-1					
NO.	DESCRIPTION	MATERIAL	FINISH	Q'TY	DRAWING NO.	SCALE 2.5/1	ISSUE A			

UNLESS OTHERWISE SPECIFIED TOLERANCES
 0.5-6 = ±0.2
 6-30 = ±0.4
 30-120 = ±0.6
 120-315 = ±1
 315-1000 = ±1.6
 1000-2000 = ±2.4

DATE 10-11-01'
 DATE 10-11-01'
 DATE 10-11-01'